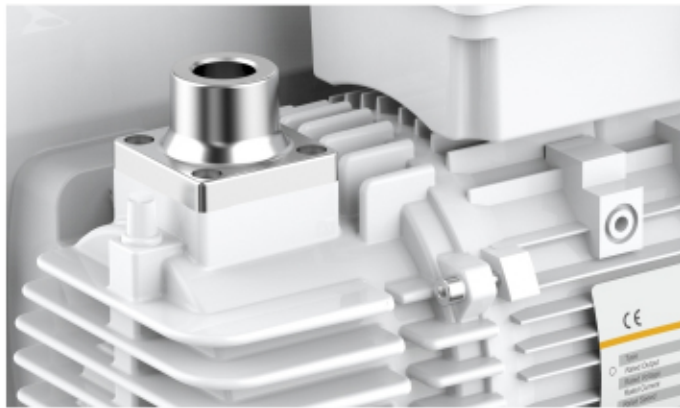


VSV-20

Pumping speed: 20m³/h

Single-stage rotary vane vacuum pump



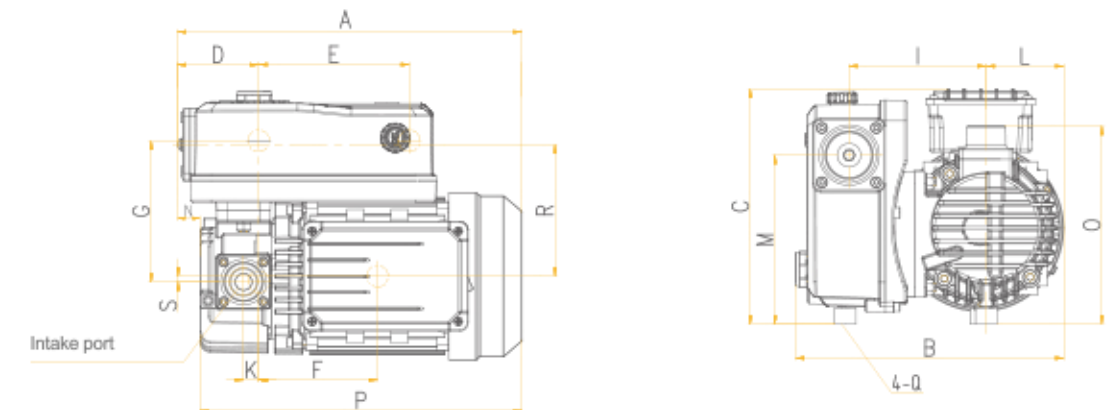
Product feature

- Excellent performance**
 Integral pump structure, require higher accuracy; Proven vanes technology, makes the performance more stable; Ensure the pump system with higher reliability.
- Excellent heat dissipation**
 Air-cooled structure, without external water cooling system, reduce the installation and maintenance costs.
- Clean and green**
 Built-in high quality oil mist filter, which can effectively filter oil mist, avoid oil mist pollution, protect the environment clean.
- FKM seals**
 Improve corrosion resistance and solve the problem of oil leakage.
- Anti-suckback structure**
 Protect the vacuum system from oil contamination after shutdown.
- Compact structure**
 Integrated design between pump and motor, lighter, smaller, the size is satisfied all kinds of application.



Specifications

Model			VSV-20
Displacement speed	50Hz	m ³ /h	20
	60Hz		24
Ultimate total pressure	Without gas ballast	mbar	/
	With gas ballast I	mbar	≤1
Ultimate total pressure	With gas ballast II	mbar	/
	With gas ballast I	mbar	15
Water vapor tolerance	With gas ballast II	mbar	/
Power supply			Single/Three-Ph
Power rating (50Hz)		kW	0.75/0.9
Level of protection			IP54
Intake and exhaust			G1/2" G3/4"/-
Oil capacity		L	0.45
Motor speed (50/60Hz)		rpm	2880/3440
Ambient temperature		°C	10-40
Noise level (50Hz)		dB	≤65
Weight		Kg	19.5
Dimension (L*W*H)		mm	317×249×219



VSV Dimensions (unit:mm)

Model	A	B	C	D	E	F	G	H	I	J	K	L	M	N	O	P	Q	R	S	Intake port	Exhaust port
VSV-20	318	249	219	75.5	140	110.5	131	/	127.5	/	14	72	157	21	184	299	M8	122.3	5.3	G1/2" G3/4"	/